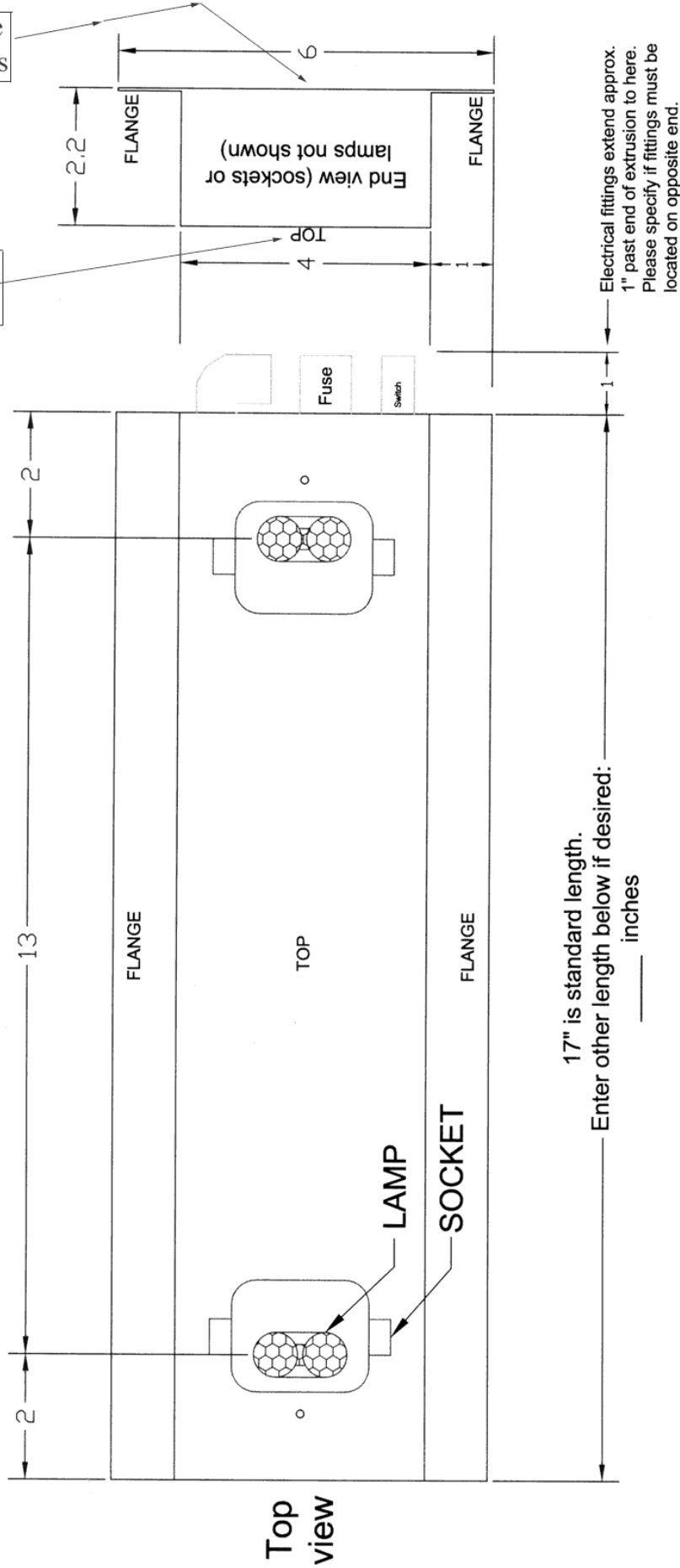


### Model E-200 Air Probe Sanitizer - Standard Lamp Locations.

If std. lamp spacing (13") or location (2" from each end) must be changed, please X out and write in desired dimensions.



The standard probe (lamp) spacing is 13 inches from the center of one probe to the center of the other probe. If you need to figure the distance between the quartz glass portion of the probes: The probes are 7/8" thick and 1.5" wide. This makes the distance between the glass about 12" for the E-200 and T-200 as shown above. The probe spacing and/or orientation may be field-changed; please view the videos for more information.

The dimension from the socket mounting surfaces to the ends of the lamps is approx. 9 inches.

A 16" long lamp is also available where necessary. Note that mounting considerations and wind loading need to be taken into account when choosing this lamp. We strongly suggest using the standard 8" lamp. The warranty on this special 16" long lamp is only one year.

Sockets mount here on FME-xxx models

Sockets mount here on E-xxx models